



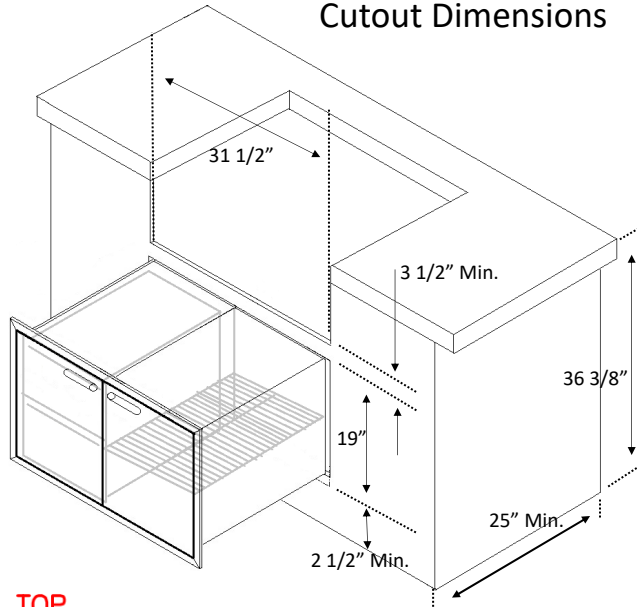
# LYNX SEALED PANTRY

## LPA36-4

### Introduction:

This storage accessory is designed with interior lighting. The stainless steel body is rigidly constructed and has professionally polished stainless steel handles.

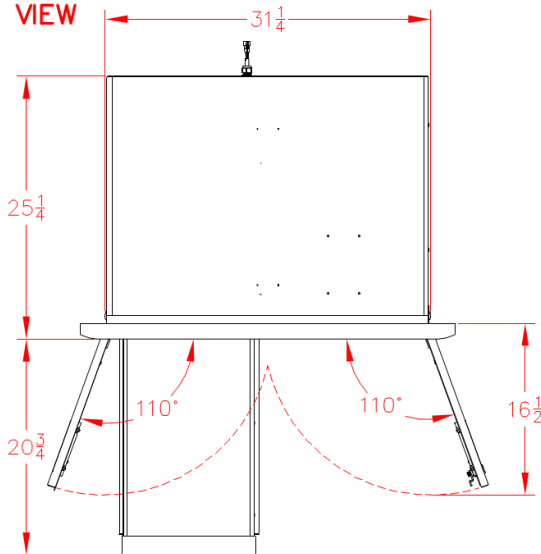
### Cutout Dimensions



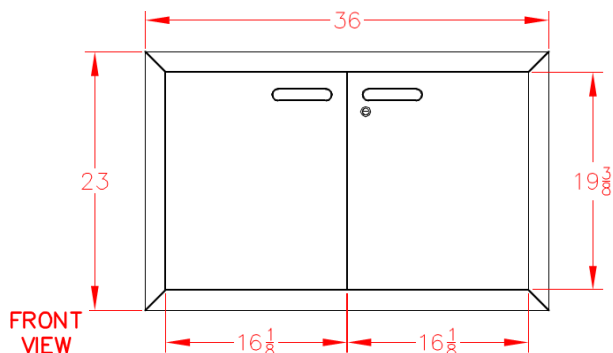
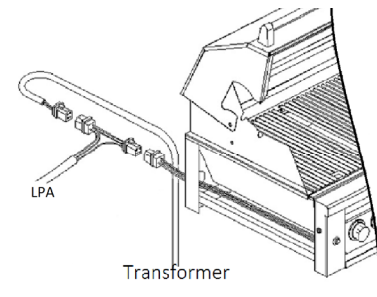
- Part of the Ventana Collection, the finest storage solutions for the outdoor kitchen
- Magnetic gasket insures tight seal which protects cookware, dry goods and more from pests and weather
- Full extension glide out drawers
- Adjustable wire shelf
- Illuminated drawers
- Storage space is 31" x 18" x 23"
- Easy to clean
- No crevice for insect nest
- Sleek contemporary look
- A 4-pin electrical connector is provided to connect the Pantry to a Lynx grill.

\*may require Lynx Accessory Switch Kit for power supply (LASK)

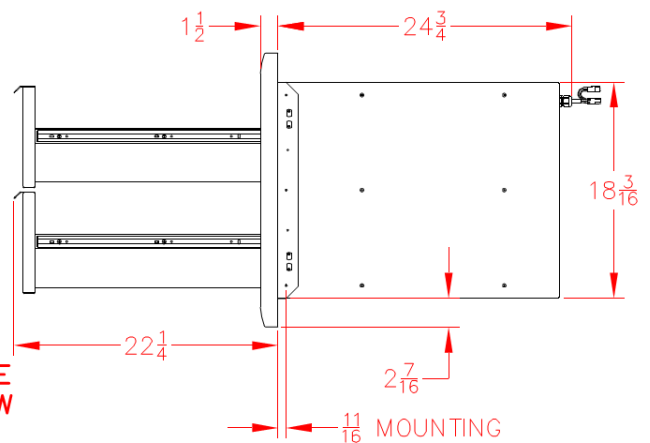
### TOP VIEW



### Electrical Connection

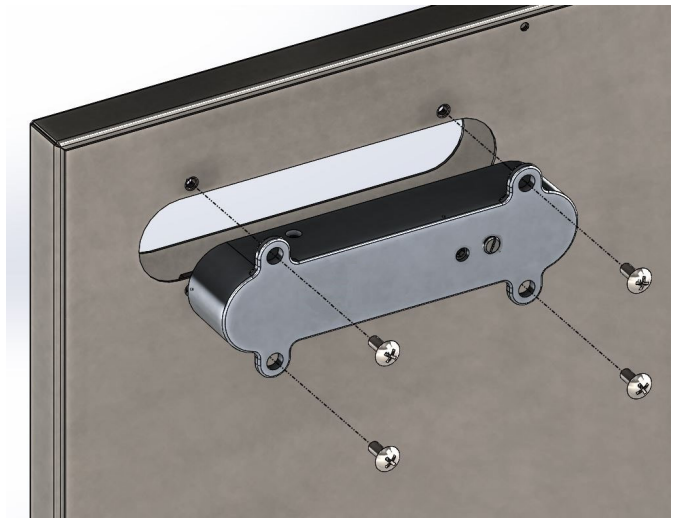
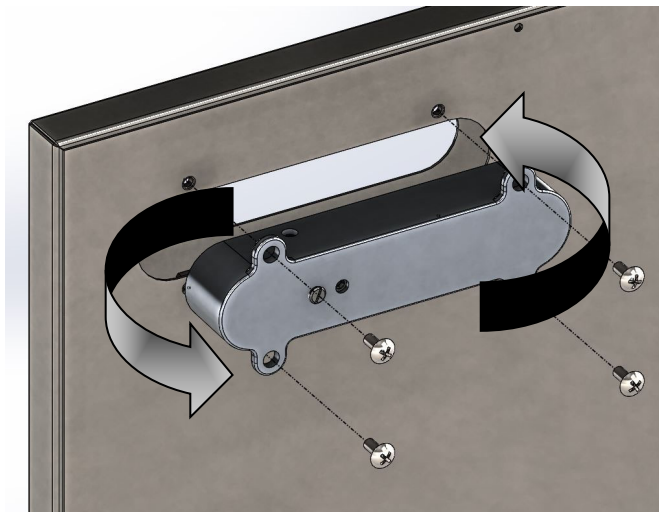
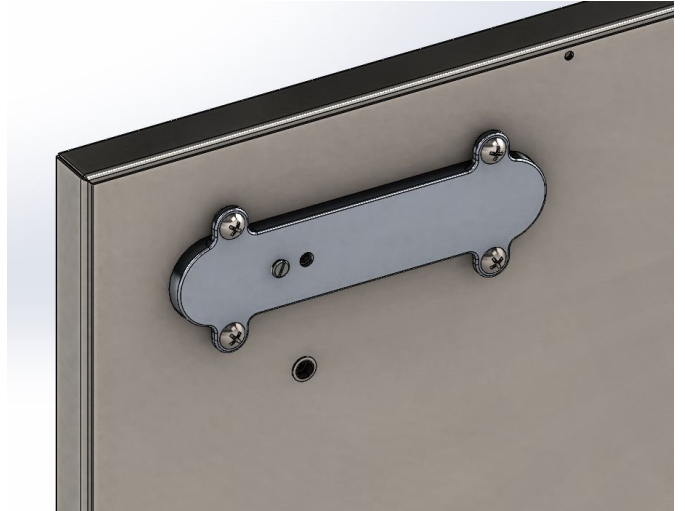
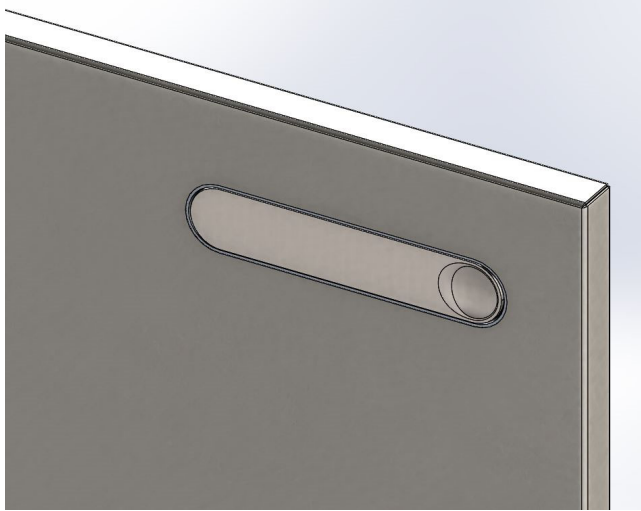


### SIDE VIEW



# REVERSAL OF DOOR HANDLE ORIENTATION

TO CHANGE THE ORIENTATION OF HANDLES , PLEASE REFER TO THE DIAGRAMS BELOW.



Lynx Grills, Inc.  
7300 Flores St.  
Downey, CA 90242  
[www.lynxgrills.com](http://www.lynxgrills.com)  
Ph. 562-299-6900



Lynx Customer Care  
Ph.: 888-289-5969  
Fax: 562-299-6978  
[Service@lynxgrills.com](mailto:Service@lynxgrills.com)