

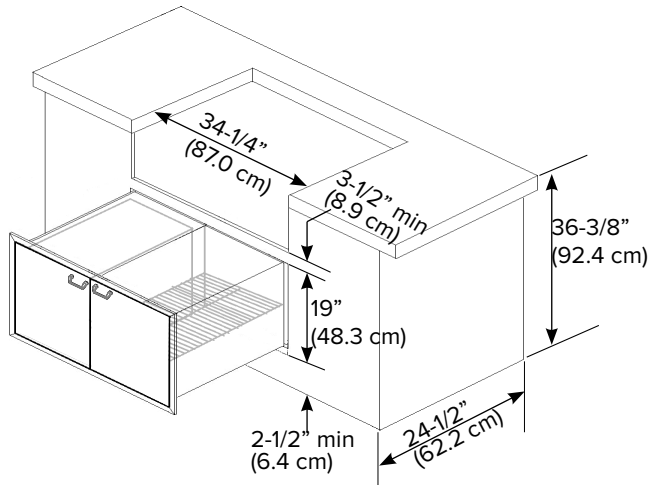


LYNX SEALED PANTRY MODEL: LPA36

Introduction:

This storage accessory is designed with interior lighting. The stainless steel body is rigidly constructed and has professionally polished stainless steel handles.

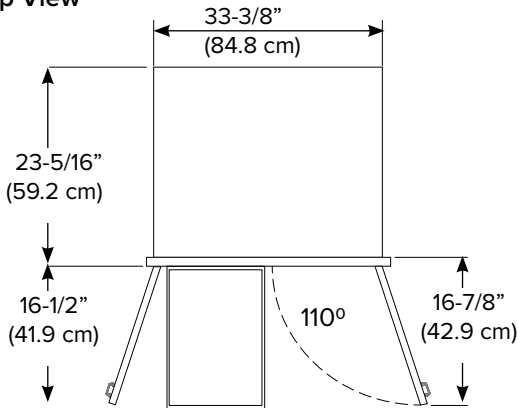
Cutout Dimensions



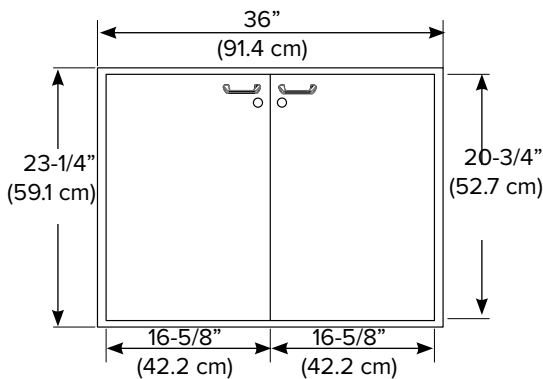
- Part of the Classic Series, a mainstay of Lynx outdoor storage.
- Lockable doors keep stored items out of reach of children or pets.
- Magnetic gasket insures tight seal which protects cookware, dry goods, and more from pests and weather.
- Full extension glide out drawers.
- Adjustable wire shelf.
- Illuminated drawers.
- Storage space - 31"x18"x20"
- Easy to clean.
- No crevice for insect nest.
- Durable and corrosion resistant stainless steel construction.
- A 4-pin electrical connector is provided to connect the pantry to the Lynx grill.

NOTE: May require Lynx Accessory Switch Kit (LASK) for power supply

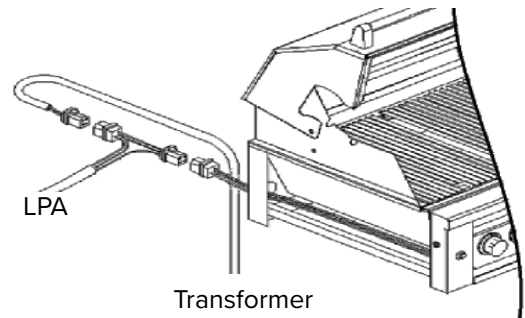
Top View



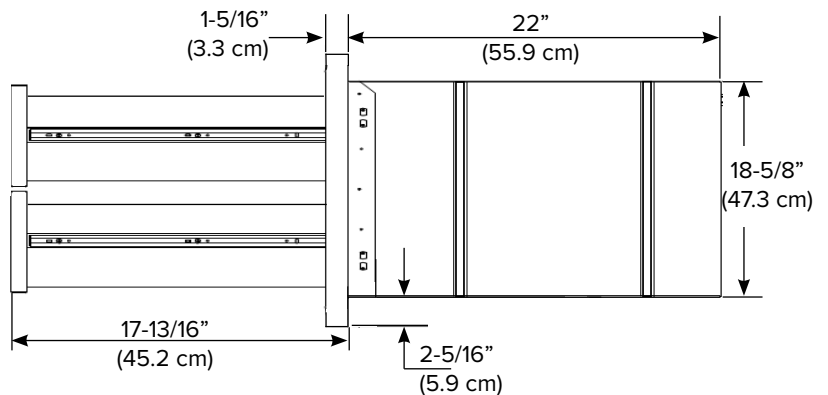
Front View



Electrical Connection



Side View



Lynx Grills, INC.
62201 Hwy 82 West
Greenwood, MS 38930
www.lynxgrills.com

P/N 37557 REV A 01/2022

Lynx Customer Care
PH. 888-289-5969
service@lynxgrills.com